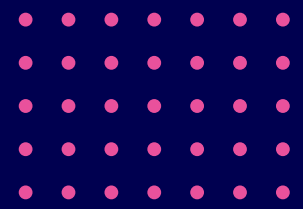


# Case Classification System.

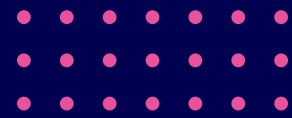


Keet Health uses a proprietary treatment-based case classification system that classifies patient populations according to a region (area) of injury, treatment categories, and other condition-based qualifiers. This method of classification creates homogeneous patient subgroups, allowing therapists to make meaningful comparisons and analysis between patients as well as stratify a patient's risk for delayed recovery.

Keet Health's Case Classification system was developed through years of extensive research by Inter-mountain Healthcare and offers more than 1500 classification selections in the Keet Health platform. The following table identifies the Keet Classification Region/Area of Injury with associated treatment categories along with examples of some of the more commonly selected qualifiers.

Region / Area of Injury	Treatment Categories	Severity / Qualifier
Amputation	Non-Traumatic, Traumatic	AKA, BKA, Foot Full, Foot Partial, Other
Amputation Bilateral	Non-Traumatic, Traumatic	AKA, BKA, Foot Full, Foot Partial, Other
Amputation Unilateral	Non-Traumatic, Traumatic	AKA, BKA, Foot Full, Foot Partial, Other
Brain	Non-Surgical, Surgical	Brain Injury, CVA Bilateral, CVA Cerebellar, CVA (L), CVA (R), Mild TBI (Concussion), Other
Cancer / Tumor	Non-Surgical, Surgical	Astrocytoma, Glioma, Lymphoma, Metastatic, Other, Schwannoma
Cancer / Tumor	Transplant, Non Transplant	Acute and chronic leukemias, Multiple Myeloma, Hodgkin and Non-Hodgkin Lymphoma, Aplastic Anemia
Cervical	Conservative, Surgical	Chronic Neck Pain with and without ROM Restrictions, Whiplash, Headache, Discectomy
Elbow	Conservative, Surgical	Distal humerus FX, Radial Head FX, Olecranon FX, Medial Epicondylitis, Lateral Epicondylitis, Olecranon Bursitis, Distal Biceps Tendon Rupture / Repair, Medial / Lateral Collateral Ligament Sprain / Repair, ORIF, Ulnar n. Decompression
Foot / Ankle	Conservative, Surgical	Subtalar OA, Talocrural OA, Mid-foot sprain, Achilles Tendonitis, Post Tibialis Tendonitis, Plantar Fasciitis, Achilles / Gastroc/Soleus Tear / Rupture or Strain, Trimalleolar FX, Bimalleolar FX
Hand	Conservative, Surgical	Metacarpal FX, Proximal / Middle / Distal Phalanx FX, OA, Rheumatoid Arthritis, Dislocation PIP/ DIP / MP joint, Trigger Finger, Flexor / Extensor Tendon Repair, ORIF
Hip	Conservative, Surgical	Glut Med / Min, Proximal Hamstring, Adductor, Iliopsoas Tear / Tendonitis; Trochanteric Bursitis, Piriformis Syndrome, FAI, THA, ORIF, Tendon / Labrum Repair
Knee	Conservative, Surgical	ACL / MCL / LCL / PCL / Meniscus tear; Patellar Instability / Tendonitis, Tibial Plateau FX, Patellar FX, DJD, Osteochondritis Dissecans
Lumbar	Conservative, Surgical	Stabilization, Fusion, Decompression, Discectomy

Continued on next page.



Region / Area of Injury	Treatment Categories	Severity / Qualifier
Lymphedema	Lymphedema Praecox <35, Lymphedema Tarda >35, Other	Head / Neck, UE, Breast, Genital, LE: Stages 0, 1, 2, or 3
Lymphedema Secondary	CVI / Plebolymphedema, Post Thrombotic Syndrome / DVT, Obesity, Cancer related, Orthopedic / Traumatic related, Neurological Related Lymphedema, Lipedema / Lipolymphedema, Other	Head / Neck, UE, Breast, Genital, LE: Stages 0, 1, 2, or 3, Post-operative, Non-operative
Neuro	Non-Surgical, Surgical	CP, Spina Bifida, Polyneuropathy, Guillain Barre Syndrome, MS, ALS, Cerebellar Ataxia, Parkinson's Disease, Peripheral Neuropathy, SCI
Other		
Pelvic Health	Conservative, Surgical, Pregnancy Related Pelvic Joint Pain, Incontinence, Pelvic Floor Dysfunction, Other	Pelvic Girdle Syndrome, SI Syndrome, Pelvic Floor Dysfunction, Prenatal Dysfunction
Shoulder	Conservative, Surgical	SLAP, Glenohumeral Instability, Adhesive Capsulitis, AC Separation, RTC Tear / Tendonitis, Brachial Plexus Injury, ORIF, Biceps Tendonitis
Thoracic	Conservative or Surgical	Thoracic Pain, Vertebroplasty, Rib Dysfunction, Compression FX
Torticollis		Mild, Moderate, Severe; Early, Later, Delayed
Wrist	Conservative or Surgical	Ganglion Cyst, Sprain / dislocation, Synovitis, Carpal Tunnel Syndrome, Radial Nerve Palsy, Brachial Plexus Injury, ORIF: Ulna / Radius / Metacarpal / Carpal; Flexor / Extensor Tendon Repair

MIPS participation with Keet is as easy as 1, 2, 3.

Visit our [Knowledge Base](#) to learn how.